



**WELCOME TO
LIMITED EDITION
LUXURY**

**vinte
illas**

20 PREMIUM VILLAS



PREMIUM 4 BHK VILLAS

Vinte
villas

20 PREMIUM VILLAS

EXPERIENCE

ROYAL WAY OF LIVING

Living large comes naturally when you reside at such majestic villas. An epitome of exclusive richness, these villas showcase your status to the world and commands utmost prestige. So come and live a life fit for kings





EMBRACE

THE DOMAIN OF HAPPINESS

These premium 4 BHK villas redefine the word luxury. Each detail and corner of your home is thoughtfully designed to fulfil your wishes of a dream home. It doesn't get bigger and better than Vinte Villas

24 X 7 SECURITY • GARDEN • WATER BODY

ENJOY
FESTIVE LIFESTYLE
EVERYDAY

Boredom and dullness has no place in this
wonderland. Let go off all your worries and stress.
Revel in the exciting amenities crafted just for you and
your family to enjoy for a lifetime



SPLASH POOL • WOODEN DECK • MULTIPURPOSE HALL



24.00MTS. WIDE T.P. ROAD

ENTRY



GROUND
FLOOR PLAN

- TYPE - A
- TYPE - B
- TYPE - C
- TYPE - D

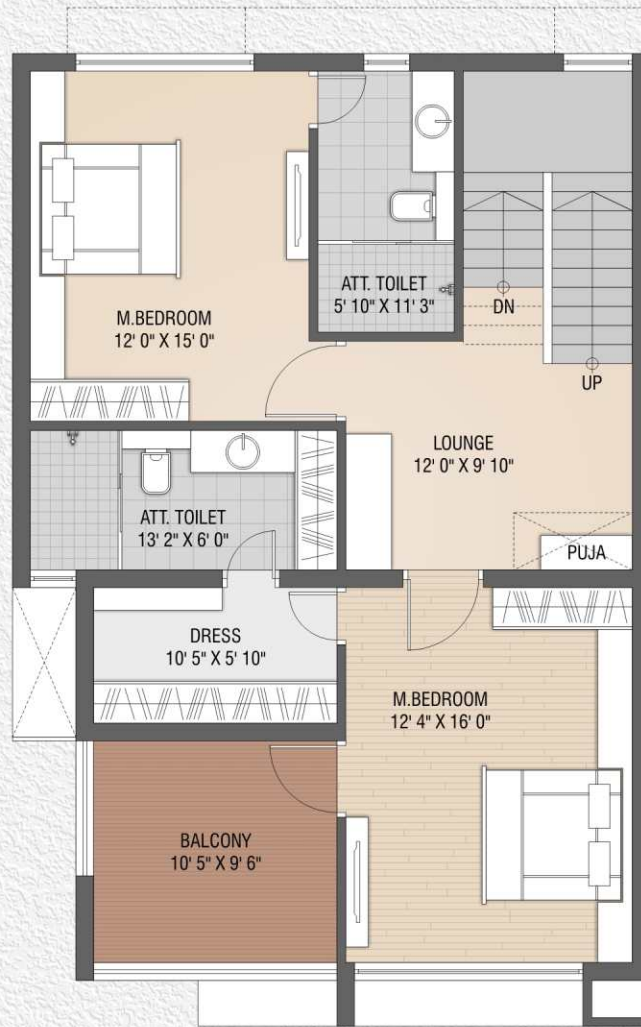


A

TYPE

UNIT NO
1 TO 3 & 18 TO 20

GROUND FLOOR PLAN



FIRST FLOOR PLAN



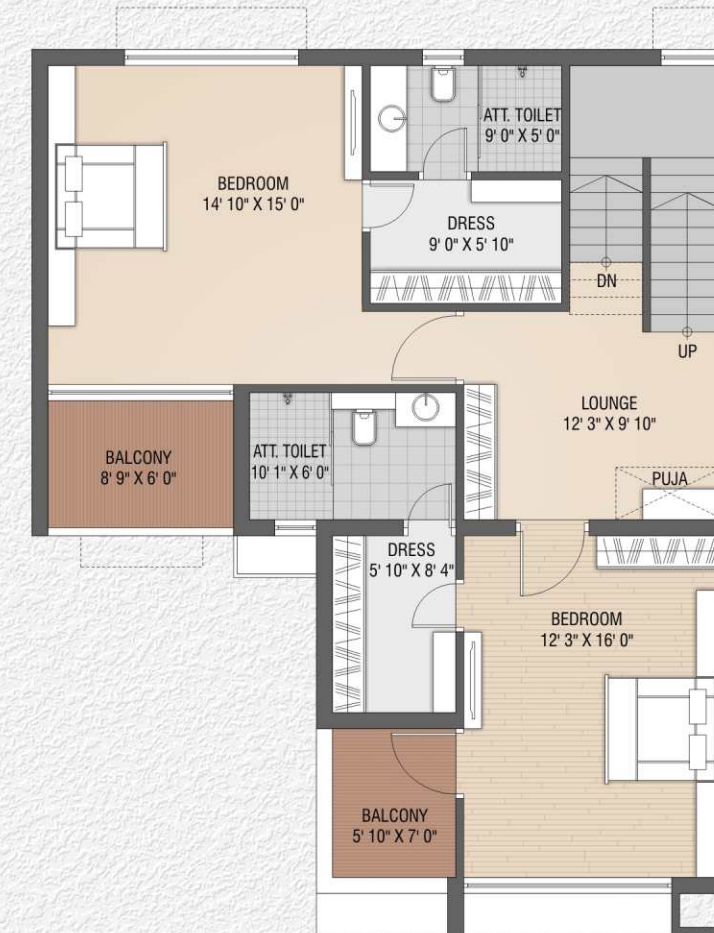
SECOND FLOOR PLAN

B

TYPE

UNIT NO
4 TO 8 & 13 TO 17

GROUND FLOOR PLAN



FIRST FLOOR PLAN

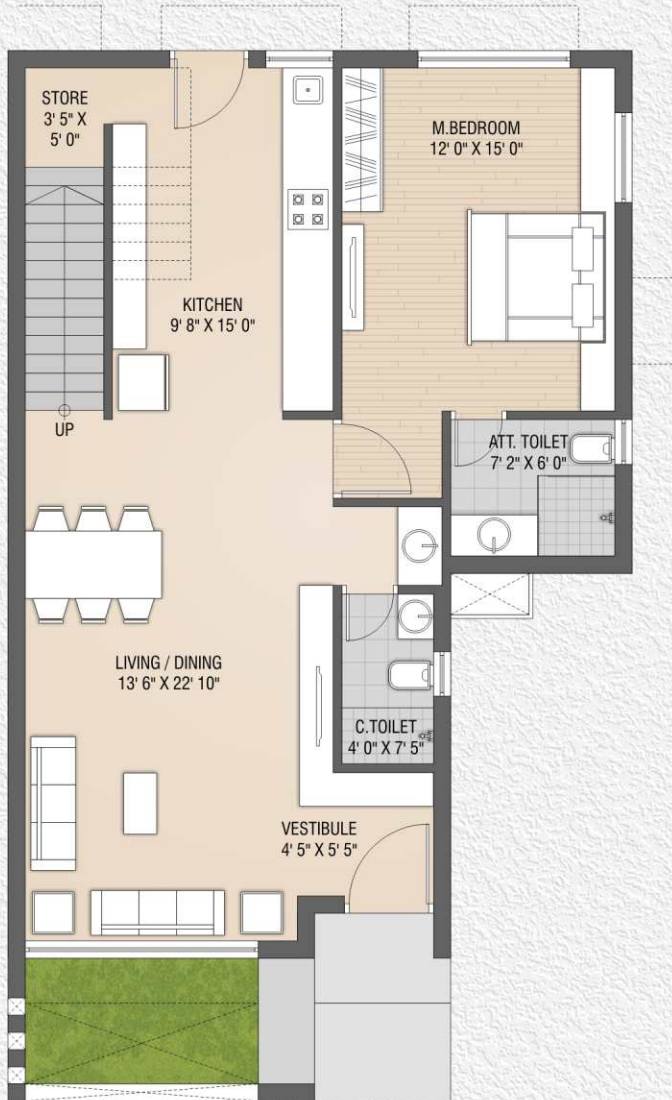


SECOND FLOOR PLAN

C

TYPE

UNIT NO
9 & 12



GROUND FLOOR PLAN



FIRST FLOOR PLAN

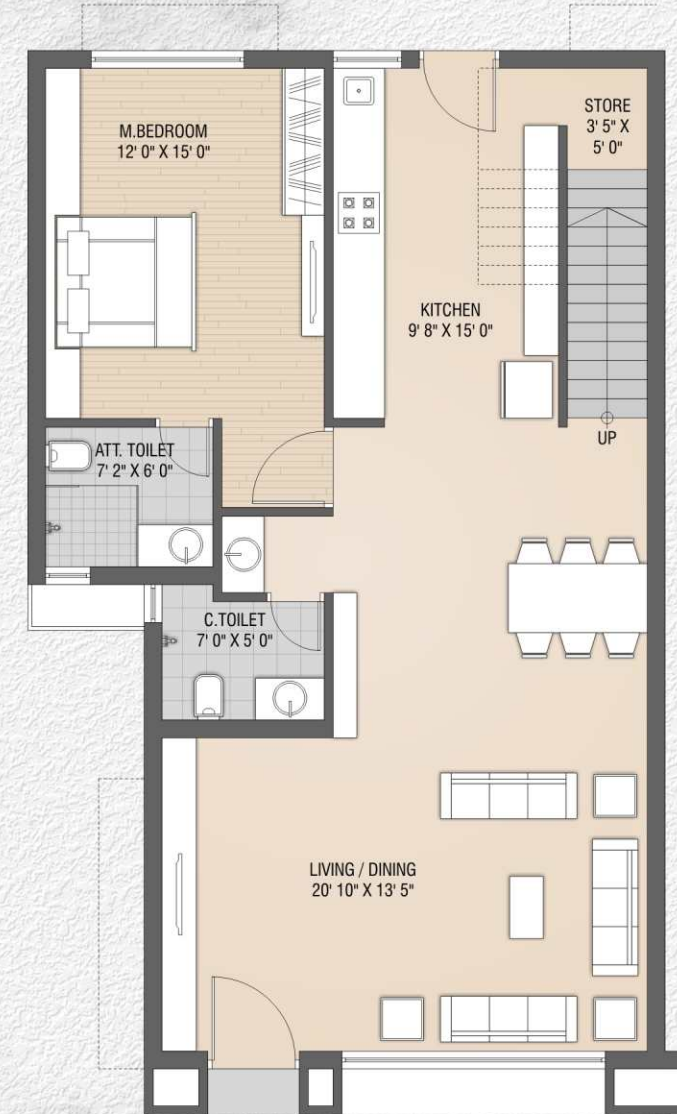


SECOND FLOOR PLAN

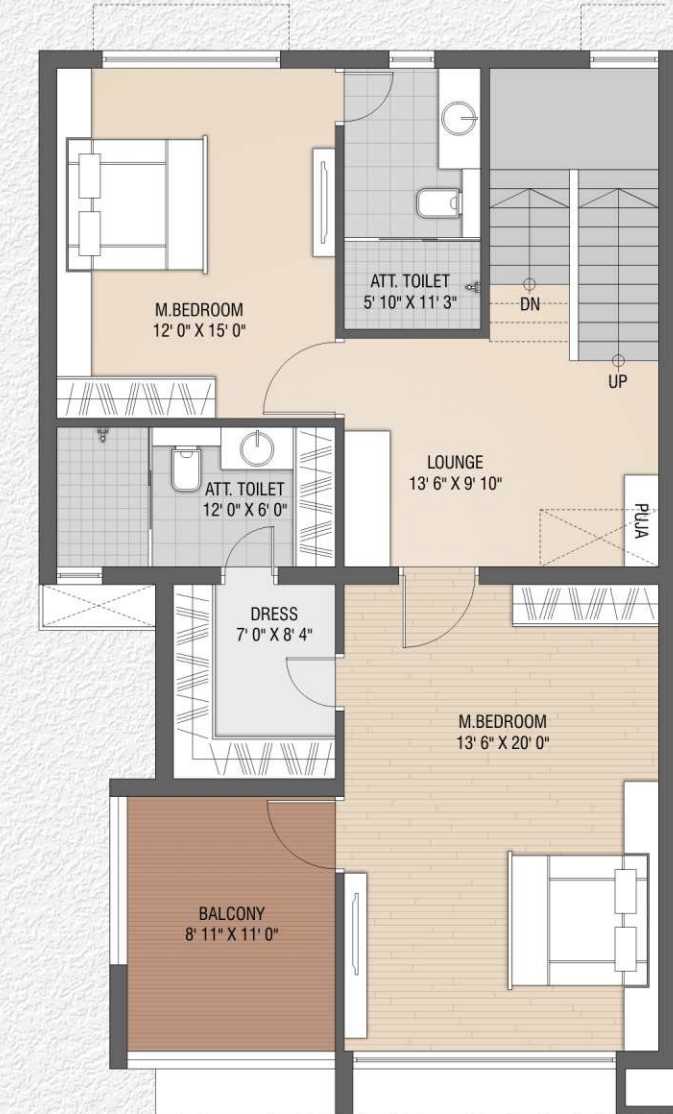
D

TYPE

UNIT NO
10 & 11



GROUND FLOOR PLAN



FIRST FLOOR PLAN



SECOND FLOOR PLAN

SPECIFICATIONS



FLOORING

- 800 x 800 Double charge vitrified tiles of standard company



KITCHEN

- Granite platform with sink
- Ceramic tiles upto lintel level



WINDOWS

- Anodized aluminum sliding windows



DOOR

- Main door: Veneer finish with wooden frame
- Internal doors: Flush door finish with wooden frame



TOILETS

- Branded tiles upto lintel level
- Premium branded sanitary ware and CP fittings



AIR CONDITIONING

- Identified space for ODU unit of air conditioner



ELECTRICAL

- ISI / Branded wires and cables
- 3 Phase concealed wiring
- Branded modular switches
- DB with earth leak circuit breaker



SECURITY

- CCTV Surveillance of common area
- VDP and intercom from security cabin to villas

LOCATION MAP

Vinte
Villas

20 PREMIUM VILLAS

SITE ADDRESS:
F.P 69, T.P 18
Vinte Villas, Nr. Janvi Farm
B/h Pramukh Park Bungalows
PDPU Road, Raysan
Gandhinagar - 382007



Legal Notes:• Stamp Duty, Registration Charges, Legal Documentation Charges, Advance Maintenance, Fix Maintenance Charges, GMC/GUDA Charges and GEB Charges including cable and sub-station cost shall be borne by the purchaser. • GST+ any additional charges, taxes, cess or duties levied by the government / local authorities prior, during or after the completion of the scheme will be borne by the purchaser. • In the interest of the continuous developments in design and quality of construction, the developer reserves all rights to make suitable changes in the scheme and all the purchasers shall abide by such changes. • Changes / Alteration of any nature, including the elevations, exterior color scheme of the units or any other change affecting the overall design concept and outlook of the scheme are strictly not permitted during or after the completion of the scheme. • The brochure is intended only to convey the essential design and technical features of the scheme and shall not be construed to form part of the legal document. Agreement for sale shall be final and binding to the purchaser. • All elements, objects, treatments, materials, equipments and color schemes shown are artist's impressions. Actuals may be different as per architect's designs. • All dimensions shown here are unfinished to unfinished wall and of the longest measure of the area



Developer



Contact Number

99092 54546

98793 21396

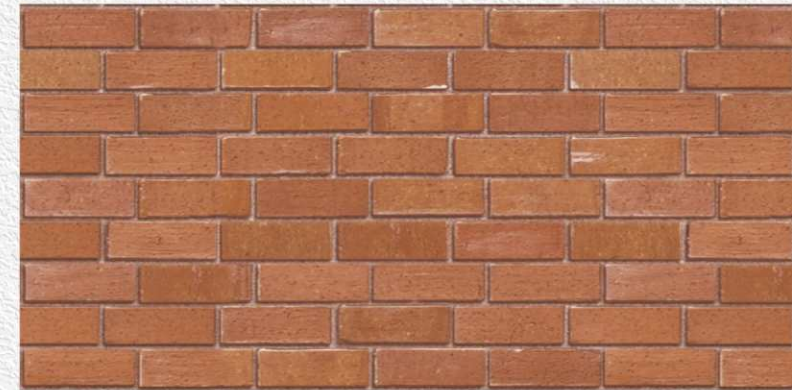
99252 42808

www.avaska.in | info@avaska.in

Architect



Structure Designer



RERA REG. NO

PR/GJ/GANDHINAGAR/GANDHINAGAR/Others/RAA02670/150518

www.eyecondesign.in